



PROPOSAL

STG is a supplier of the
highest quality fabrics
for workwear market

SAFETY

FIRST AMONG EQUALS

5 **people die** because of occupational accidents or work-related diseases **every minute**

4 workers get injured in production **every second**

Price, quality, production, human resources, processes and safety are all equally important and absolutely essential for the success of your business.

BUT IF THEY COME TO CONTRADICTION, SAFETY BECOMES A PRIORITY.

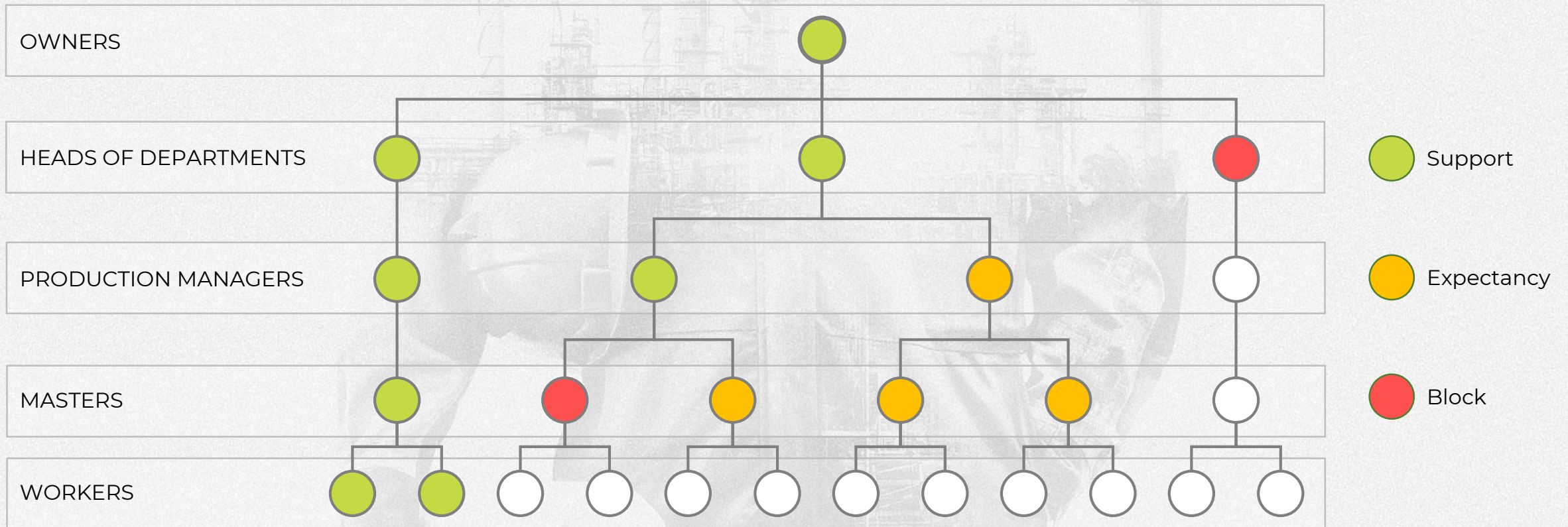
- ▶ It's economically profitable to invest in occupational safety and health, rather than eliminate the effects of accidents at work
- ▶ Each work accident in industrialized European countries will cost around 500 - 1000 euro per day
- ▶ For every euro invested in health and safety, there could be a potential benefit of more than 2 euro

LACK OF PPE IS THE SECOND-LEADING CAUSE OF WORKPLACE INJURY.



CASCADING

SAFETY CULTURE



It's important that the decisions made by the heads of departments are being accepted and implemented at each level.

SUPPORT FROM ALL STAKEHOLDERS

AND IT'S NOT ONLY EMPLOYEES

| | SENIOR MANAGEMENT | FINANCIAL DIRECTORATE | PROCUREMENT DIRECTORATE | PRODUCTION MANAGERS | MASTER / FOREMAN | EMPLOYEE |
|---------------------------------------|---|---|---|---|---|---|
| \$\$\$\$ |  |  |  |  |  |  |
| REDUCE COSTS |  |  |  |  |  |  |
| PRODUCT QUALITY |  |  |  |  |  |  |
| CONTINUITY OF PRODUCTION |  |  |  |  |  |  |
| ATTRACTIVENESS ON THE LABOR MARKET |  |  |  |  |  |  |
| REPUTATION |  |  |  |  |  |  |
| TIMELY PROVISION OF PPE |  |  |  |  |  |  |
| PPE QUALITY |  |  |  |  |  |  |
| PPE COMFORT |  |  |  |  |  |  |
| TRAUMATISM |  |  |  |  |  |  |

COMFORT

MEANS SAFETY

Key characteristics of fabrics

CONVENIENCE

Heavy fabrics are often denser, thicker and thus less flexible. More heat can build up inside of the garment. Also the stiffness of the fabric can limit movement, as a result, workers refuse to wear PPE.

MOISTURE PROTECTION

If during exposure to extreme temperatures sweat production and absorption are not properly being controlled by clothing, it can lead to water vaporization, sweat and discomfort.

BREATHABILITY

High fabric breathability means quick heat transmittance through the material, which will give workers more pleasant feeling during garment wearing.

DURABILITY

Shrinkage, stretching, pilling, discoloration and premature wear greatly affect the comfort level of workwear. Partial or complete loss of protective properties during operation can lead to serious consequences in terms of employee safety.

EFFECT OF THE PPE USE

PPE is an essential element in the process of building a safety culture, an environment where you care about employees.

- ▶ improving employee safety
- ▶ improving product quality
- ▶ increasing profitability
- ▶ increasing productivity
- ▶ reducing the incidence of occupational diseases
- ▶ increasing employee devotion



80%

QUALITY OF THE WORKWEAR
IS FABRIC

The characteristics of the fabric have a great influence on clothing comfort level and safety.

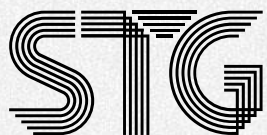
TRIAL WEAR

Trial wear is the most effective way to determine the conformity of the declared characteristics to reality

Comfort is the highest priority in any wear trial

“Comfort” means something different to everyone

Trial wear allows to avoid emotional evaluation and focus on protective properties and benefits



is a company with a full cycle of development and implementation of corporate standards, a supplier of innovative textiles

THE EXCLUSIVE REPRESENTATIVE OF THE BRANDS



DALETEC
Norway



SAPPHIRE FINISHING MILLS
Pakistan

OUR MAIN WORK DIRECTIONS

- ▶ **COMPREHENSIVE APPROACH**
and risk management
- ▶ **SUPPORT**
assistance in drafting
specification for tender procedure
- ▶ **ASSISTANCE**
development and
implementation of PPE standards
- ▶ **PRODUCTION**
selection, production and
maintenance of PPE

Provision of the given proposals is possible both as a package or separately. Any of the chosen cooperation options don't require additional expenses on your side. We can recommend an outsourcer/tailoring workshop for a well-balanced pricing proposal.

FINAL PRODUCT



- AUDIT
- PPE STANDARD
- BRANDBOOK
- E-CATALOGUE
- INPUT CONTROL
- COMPREHENSIVE SERVICE

CASE STUDIES



METINVEST
Holding

Multi-stage set of works on substantiation and development of PPE corporate standard with implementation monitoring and improvement.

IMPLEMENTATION TIMELINE: 2011-2016



Agroholding Kernel (Kernel Trade LLC and Kernel Agro LLC)

Audit of technical requirements for corporate workwear.

Development of corporate Customer`s style. Carrying out production tests at the Customer's enterprises.

Preparation of the document "Standard of workwear of the division of production assets".

Staff training for effective use of the developed documents.

IMPLEMENTATION TIMELINE: 2016-2017



Agroholding Agroprosperis
(Ltd. AGROPROSPERIS)

Audit of technical requirements for corporate workwear. Development of corporate Customer`s style.

Carrying out production tests at the Customer's enterprises.

Preparation of the document Catalog of Workwear approved for use in Agroprosperis branches.

IMPLEMENTATION TIMELINE: 2017-2018

CASE STUDIES



Agroholding IMK
(Ltd. "IMK")

Development of the document "Catalog of workwear".

Material selection, production testing of workwear, draft text of document with a description and images of workwear.

IMPLEMENTATION TIMELINE: 2017-2018

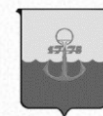


Ltd. ROSTDORBUD
(RDS UKRAINE)

Development of the document "Catalog of workwear".

Material selection, production testing of workwear, draft text of the document with a description and images of workwear.

IMPLEMENTATION TIMELINE: 2020-2021



Municipal enterprises
of Mariupol

Audit of technical requirements for workwear. Development of corporate Customer`s style.

Carrying out production tests at the Customer's enterprises. Development of workwear sketch.

Development of the document "Catalog of recommended special clothing, footwear and personal protective equipment for employees of public utilities in Mariupol".

IMPLEMENTATION TIMELINE: 2019-2020

CASE STUDIES



SE STP YUZHNY (South Port)

Joint work with the relevant company departments responsible for workwear. Diagnostic audit (survey and analysis of workplaces).

Corporate image development. Selection of fabrics and components for the production of clothing samples. Carrying out of production tests of research and industrial parties on working platforms. Analysis of test results. Development of the section of the Customer's tender documentation, which regulates technical description of the model, requirements for fabrics and materials, acceptance control.

IMPLEMENTATION TIMELINE: 2019-2020



SE MARIUPOL SEA TRADING PORT

Joint work with the relevant company departments responsible for workwear. Diagnostic audit (survey and analysis of workplaces). Development of corporate style. Selection of fabrics and components for the production of clothing samples. Carrying out of production tests of research and industrial parties on working platforms. Analysis of test results.

Development of the section of the Customer's tender documentation, which regulates: technical description of the model, requirements for fabrics and materials, acceptance control.

IMPLEMENTATION TIMELINE: 2019-2020



Khmelnytskyi Nuclear Power Plant

Joint work with the relevant company departments responsible for workwear. Development of corporate style. Selection of fabrics and components for the production of workwear samples. Carrying out of production tests of research and industrial parties on working platforms. Analysis of test results. Participation in the development of the document "Technical requirements and delivery conditions" for workers' costumes with a description of the models, which includes visual design and a list of materials for the manufacture of workwear. The recommendations were developed, documented and implemented for checking the workwear input quality control.

IMPLEMENTATION TIMELINE: 2019-2020

HEALTHY AND SAFE WORK ENVIRONMENT — GUARANTEE OF A HEALTHY BUSINESS.

SAFETY

IT IS NOT EXPENSES, **BUT INVESTMENTS!**

Address: Kalisz, ul. Zacisze 2, 62-800

Sales department: +48 718 808 456

Business hours: Mon-Fri from 9:00 to 18:00

stgpoland.pl

info@stgpoland.pl

